





# COMMUNITY CORRECTIONS

115 West 1<sup>st</sup>  
Hutchinson, Ks 67501  
Phone 620-665-7042  
Fax 620-662-8613

---

## Advisory Board Agenda January 27, 2022

Welcome	Judge McCarville
Approve Minutes	Judge McCarville
New Business	Randy Regehr
1. State and County Funding Requests	
2. Comprehensive Plan Grant	
Closing	Judge McCarville

**Reno County Community Corrections**  
**Thursday, July 22<sup>nd</sup>, 2021 4:00pm**  
**Advisory Board Meeting**

Attending from Advisory Board: Elizabeth Allan, Tom Stanton, Judge McCarville, Martin Robertson, Cathy Nisly, Lacy Stauffacher, Shawn McHaley, Stephanie Springer

Absent: Shannon Hauschild, Ray Hemman, Carolyn Parson, Erica Rivera

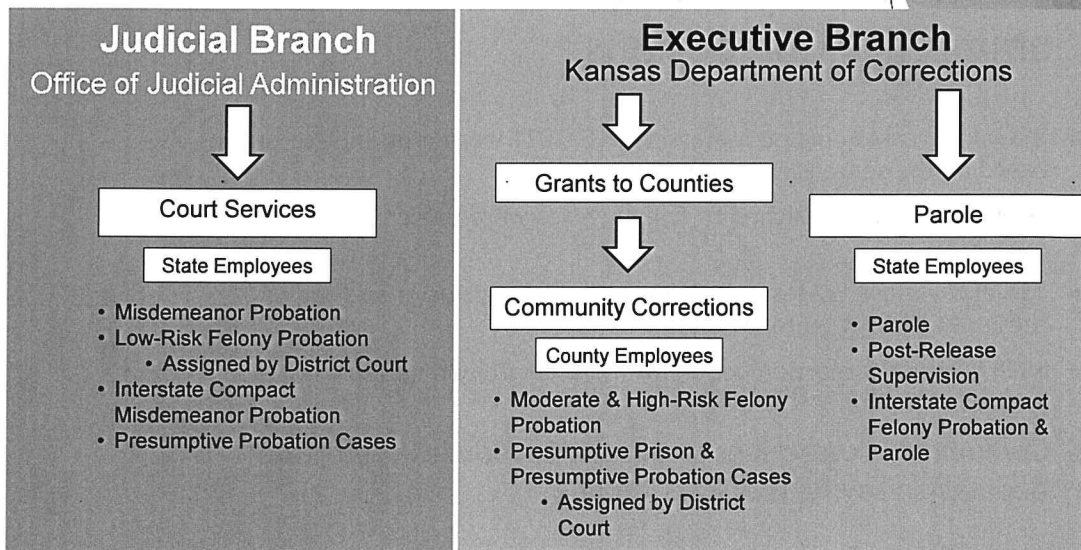
- 1) Welcome to Advisory Board from Judge McCarville.
- 2) Motion to approve minutes from the last meeting by Cathy Nisly with a second motion by Elizabeth Allan and all approve.
- 3) No old business to address.
- 4) New business – Randy Regehr
  - A. FY '21 Year End Report - The goals for this year were written pre-Covid, which hindered some progress. ISO's and supervisors had mandatory DOC training in WRNA, LSCMI, Trauma, Gender Responsivity, and Athena. There was also a vast amount of coaching and training by the ISO II's. In person classes for SAP, CBI, BIP stopped but did resume via Zoom and eventually a smaller in person setting for SAP towards the beginning of the 4<sup>th</sup> quarter. The goal for client discharges not ending in revocation to prison was 75% and Community Corrections ended with 74.5%. Randy noted challenges the officers face include burnout, high caseloads, medical leave, and a high percentage of new officers joining the team.
  - B. FY '21 Budget Adjustments - A small amount of money was moved from drug testing supplies and substance abuse medication to salaries, internet, office equipment, and office supplies. The total amount adjusted was \$7,403.55.
  - C. Revised FY '22 Grant Budget - Community Corrections was cut by \$550 on the Behavioral Health grant. A couple of adjustments were made to cover this.
  - D. FY '22 Carryover Reimbursement Budget - Community Corrections collected around \$25,000 in client reimbursements during FY '21. Some of this money will be used to fund wages for staff and other agency needs. Motion to approve new business by Tom Stanton with a second motion by Stephanie Springer and all approve.
  - E. State and County Funding Requests - Community Corrections asked Reno County for a contribution to fund the budget shortfall created by OJA's increased wage scale. Currently the only money Community Corrections receives from the County is for Drug Court. The County Commissioners agreed it would be appropriate to fund \$90,000 but it still needs to pass the vote in August. A similar trend is occurring across the state.
- 5) No other business to address. Motion to adjourn the meeting by Stephanie Springer with a second motion by Martin Robertson and all approve.

# Kansas Community Corrections Association

Funding Impacts on Community Safety

1

## Kansas Community Supervision Structure



2

## Community Corrections' Role Within Field Supervision

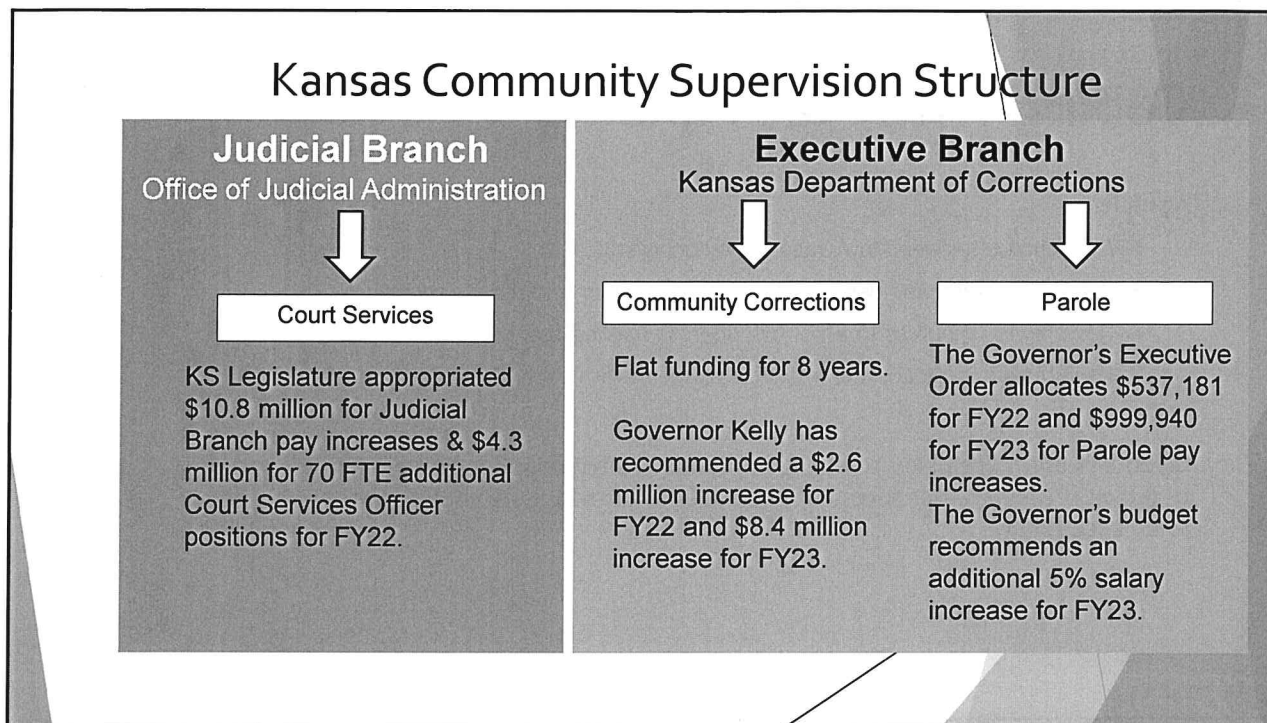
- ▶ Enhance Public Safety
- ▶ Reduce Prison Beds
- ▶ Reduce Costs to the State
- ▶ Supervise and Assist High-Risk People Convicted of Felony Offenses to Address Substance Use, Mental Illness, and Criminal Thinking

3

## Cost Avoidance through Community Corrections

- ▶ 28% of the cases opened Statewide in FY2021 were presumptive prison based on the sentencing guidelines
- ▶ Over 40% of cases assigned to five agencies were presumptive prison in FY2021
- ▶ 25% of the closed cases in FY2020 were presumptive prison and of these 69% did not go to prison
- ▶ 1098 presumptive prison people were successfully diverted from prison in FY2020
- ▶ Community Corrections significantly reduces the prison population saving the State money

4



## Coping With Flat Funding

### Agencies:

- ▶ Must choose between low wages or reducing staff
- ▶ Reduce programming designed to change behavior and reduce recidivism
- ▶ Have fewer resources to assist offenders in making changes
- ▶ Have higher caseloads and less time to spend with each high-risk offender

Offenders are more likely to engage in illegal activity and/or be revoked to prison if they are not receiving the supervision and assistance needed to be successful.

7

## Community Corrections' Need

- ▶ \$10.8 million is needed to bring adult and juvenile Community Corrections staff up to the Office of Judicial Administration pay scale.
- ▶ Based on recommended caseload sizes, an additional 50 adult supervision officers are needed statewide
- ▶ \$3.5 million is needed to add these 50 officers
- ▶ \$14.3 million is needed to bring adult and juvenile Community Corrections staff up to the OJA pay scale and to reduce caseloads

8

## The KCCA Request

We need your support and assistance to supervise this high-risk population and to keep your communities safe.

- ▶ Community Corrections must provide competitive wages
- ▶ Caseloads must be reduced to provide public safety
- ▶ A one-time increase is not sufficient
- ▶ 50 additional officers are needed for manageable caseloads
- ▶ **Please support additional funding for Community Corrections in your communities**



